



Emory and Atlanta

The Emory campus is located six miles northeast of downtown Atlanta. The ninth largest U.S. metropolitan area, Atlanta is home to state government, regional centers of the U.S. government, and numerous corporations and organizations like the American Cancer Society, the U.S. Centers for Disease Control and Prevention, the King Center, The Carter Center, CNN and Coca-Cola. It is also a major center for higher education, which includes Emory, the Georgia Institute of Technology, Georgia State University and 16 other colleges and universities.

Here's what past participants have said:



“... a very helpful and motivating experience for prospective researchers.”



“... transformed my perception of myself as a scientist.”



“It honestly gave me confidence in myself as a scientist that I had never felt before.”

“It felt like each student, undergraduate and graduate alike, was an individual that Emory truly cared about and not a number.”

EMORY UNIVERSITY – Laney Graduate School STEM Research and Career Symposium March 25 – 27, 2015 Emory Conference Center



In collaboration with Emory College, Emory School of Medicine – Office of Postdoctoral Education, Rollins School of Public Health and the Emory University Office of the Provost.

Participants include the Graduate Division of Biological and Biomedical Sciences, the MD/PhD Medical Scientist Training Program, Public Health Sciences and the programs of Chemistry, Mathematics and Computer Science, Nursing, Physics and Psychology.



EMORY

L A N E Y
GRADUATE
S C H O O L

Laney Graduate School
Diversity in Action

Email
stem.symposium@emory.edu
Website
gs.emory.edu/STEM

Dr. Edward Morgan, Chair
Molecular and Systems Pharmacology,
Graduate Division of Biological and
Biomedical Sciences

Dr. James Kindt, Co-Chair
Chemistry



EMORY

L A N E Y
GRADUATE
S C H O O L

Laney Graduate School
Diversity in Action

The symposium brings undergraduates, graduate students and faculty advisors to Emory for presentations, networking, mentoring, and recruitment.

Convened and organized by Laney Graduate School, the goal of the symposium is to bring faculty advisors and their students to the Emory campus for two days of shared research presentations and for networking, mentoring, and recruitment. Participants will include outstanding undergraduates intending to pursue the PhD or MD/PhD degree and graduate students seeking postdoctoral opportunities. Faculty Advisors are also encouraged to attend and learn about the opportunities Emory offers.

Students are required to submit abstracts of their research for review by a selection committee of Emory training faculty from science, technology, engineering and mathematics (STEM)-related programs, including those doctoral programs that align with the MD/PhD program. Ten students will be selected to give oral presentations and all others will present their research in a poster session.

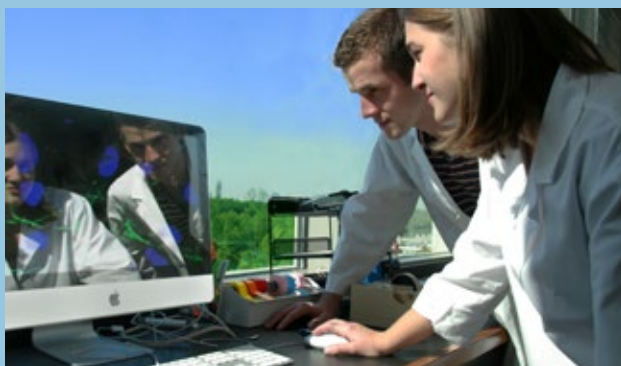
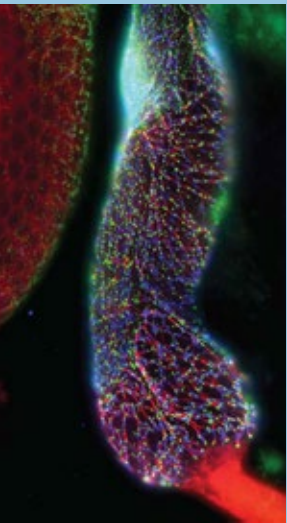
There will be ample opportunity to meet with faculty and students of the participating programs, including training grant programs. Breakout sessions will cover topics relevant to students at this stage of their career and advisors of such students.

Trainees from diverse backgrounds (to include ethnicity, race, economic status, disability, educational experience, first generation status, and in some cases, gender) can apply for diversity travel awards that will provide for travel and housing for the student and possibly her/his advisor.

A wide breadth of abstract categories are covered, including:

- Biochemistry
- Biomedical Engineering
- Biostatistics
- Cell Biology
- Cancer Biology
- Chemistry
- Developmental Biology
- Environmental Health and Sciences
- Epidemiology
- Genetics
- Immunology
- Materials Science
- Mathematics and Computer Science
- Microbiology
- Neuroscience
- Nutrition
- Pharmacology
- Physics and Astronomy
- Physiology
- Population Biology, Ecology and Evolution
- Psychology and Behavioral Sciences

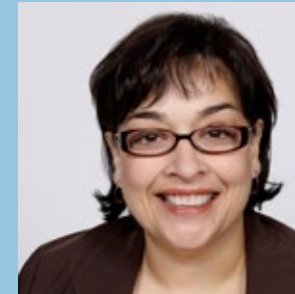
We encourage underrepresented minority students, students with disabilities, and economically disadvantaged students who are pursuing a career in STEM disciplines to apply.



Schedule at a Glance

- Wednesday, March 25** Welcome Reception
- Thursday, March 26** Keynote Remarks by Dr. Kristine Garza
Student Oral Presentations
Poster Sessions
Small Group Discussion in Area of Interest
Dinner with Keynote Remarks by Dr. Hannah Valantine
Bowling and Billiards (Social Event)
- Friday, March 27** Professional Development Breakout Sessions
Campus and Facilities Tour
Prospective Postdoc Faculty Meetings

Keynote Speakers



Kristine M. (Tina) Garza, PhD is Associate Professor of Biological Sciences at the University of Texas at El Paso. Her research program is focused on the impact of obesity on the induction of effective T cell-mediated immunity, and the influence of nanomaterials on pulmonary microbial clearance by innate immune cells. Dr. Garza's efforts in the training and mentoring of underrepresented minority students in STEM have been recognized regionally and nationally as a National Academies Education and Training Mentor in the Life Sciences. She was a member of the Board of Directors of SACNAS (Society for Advancement of Hispanics/Chicanos and Native Americans in Science), and recently took a one year leave of absence to serve as the Executive Director for SACNAS. She is once again conducting research, teaching new classes, and serving students through teaching and mentoring.



Dr. Hannah Valantine, MD is the NIH inaugural Chief Officer for Scientific Workforce Diversity, and a senior scientist in the intramural research program. She was recruited as a nationally recognized scientist to develop a comprehensive vision and strategies to diversify scientific applicant pools and pipelines, to expand recruitment methods and retention strategy, and to help promote inclusiveness and equity throughout the biomedical research community at large. Prior to starting this position in April 2014, Dr. Valantine was Professor of Cardiovascular Medicine and the Senior Associate Dean for Diversity and Leadership at Stanford School of Medicine, a leadership position she held since November 2004. She is nationally recognized for her transformative approaches to diversity, and is a recipient of the NIH Director's Pathfinder Award for diversity in the scientific workforce.

Apply to Attend



- Visit gs.emory.edu/STEM to apply
- You will be asked to submit an abstract, CV and one recommendation from a program or research advisor
- The application deadline is January 15; students who wish to apply for travel awards must also do so by January 15
- Applicants will be notified of decisions by mid-February